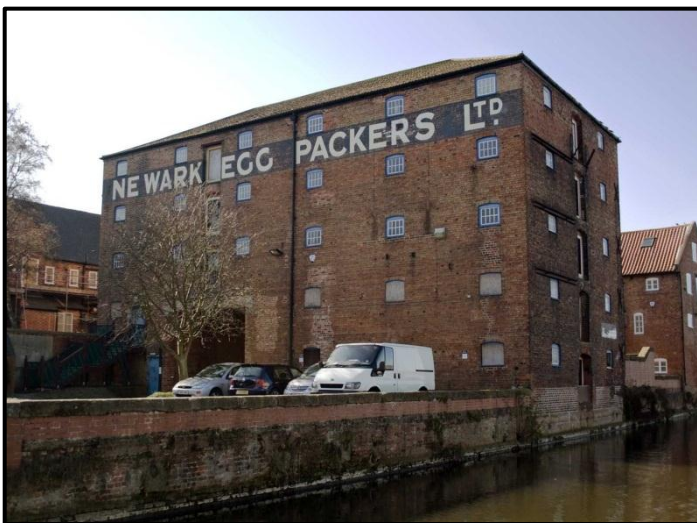


Project:
 Sector:
 Location:
 Client:
 Approx Value:

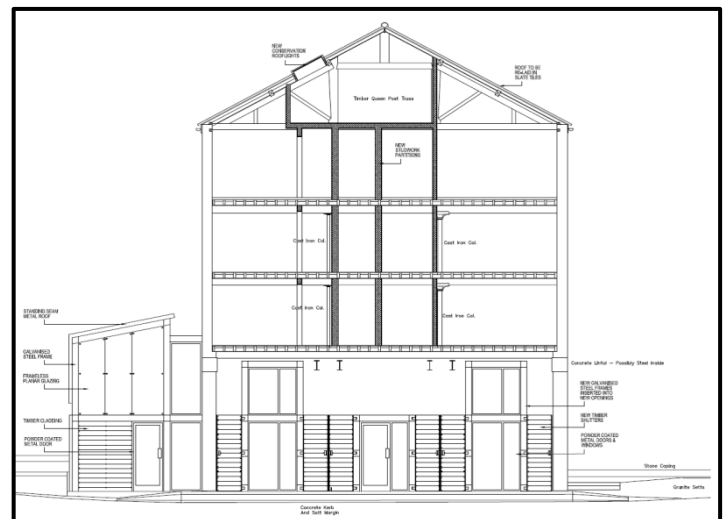
Thorpes Warehouse Conversion
Conservation / Commercial
 Navigation Yard, Newark, Nottinghamshire
 Private Client
£1.4m



The building was later rented out to Weston Mill Pottery but has been vacant since 2007. The building; that for decades has been identified by its famous banner as Newark Egg Packers Ltd, is set for an ambitious project involving its restoration and conversion into 3 high quality commercial units and 9 apartments with stunning views of the river.

GNA has been appointed as QS on the conversion of the former Thorpes Warehouse on Millgate, Newark

The warehouse was built in 1872 and originally used as a barley store and malt house, it was acquired by Newark Egg Packers Ltd in 1932, with the banner being added sometime between 1938 and 1965.



A new mezzanine floor will also be incorporated into the roof structure to provide stylish gallery spaces for the penthouse apartments.

Planning was granted in 2011 and the expected completion of the project is in late 2013.